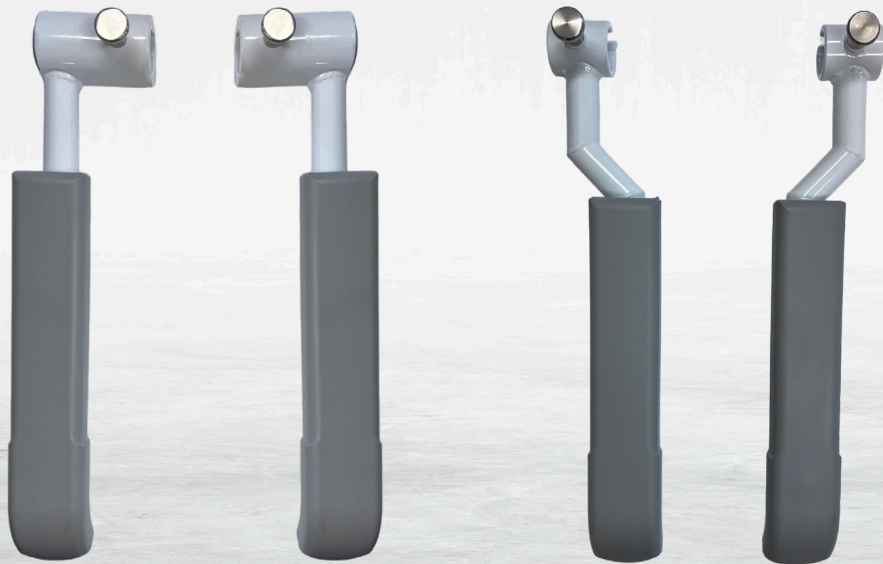


HMN since 1934



ARMREST
FOR SHOWER-/COMMODE CHAIRS



DIFFERENT CONFIGURATIONS

For our shower-/commode chairs, we offer a wide range of armrests tailored to meet the different needs of users.

The armrests are designed to provide support, comfort and safety during bathing and toilet visits. They come in various angles, widths and distances to suit the individual user. They are easy to install and remove as needed.

8 DIFFERENT TYPES OF ARMRESTS

02

Armrest with reduced and increased width

03

Armrest with increased and reduced height

04

Armrest with release lock

05

Armrest to bariatric

06

Hemiplegia armrest

REDUCED & INCREASED

REDUCED WIDTH

To achieve a narrower distance between the armrests, you can choose a set of armrests that reduces the width by 5 cm.

Each armrest takes up 2.5 cm less space. Armrests with reduced width can be useful if you want to have the armrests closer to your body.

Doesn't fit on M2 for Wall mounted toilets, M2 Mini, 200 & 250 kg.
Art.no., right 310394
Art.no., left 310395



INCREASED WIDTH

If the user needs more space between the armrests, you can buy a set of armrests with extra width along with the chair or separately.

Each armrest adds 3 cm to the distance between them.

Doesn't fit on M2 for Wall mounted toilets, M2 Mini, 200 & 250 kg.
Art.no., right 310391
Art.no., left 310392



INCREASED & REDUCED HEIGHT

INCREASED HEIGHT



The armrests are designed for users who have a standing function and can lift themselves up more easily. They are especially suitable for users with a larger torso, or if the seat is elevated with a pressure-relieving seat.

The armrests are equipped with release locks and PU foam, which make them easy to install and clean. They fit most of our M2 shower-/commode chairs, except for Flexi-Tip, Small, Mini-chairs and our XL chairs.

Art.no., right 310400
Art.no., left 310401

Doesn't fit on M2 for Wall mounted toilets, M2 Mini, 200 & 250 kg.

REDUCED HEIGHT

The lowered armrests provide a reduced height of 5 cm. The armrests can be used by anyone, but are especially suitable for people with smaller body or longer upper arms.

The armrests come with release locks and PU foam and fit most of our M2 shower-/commode chairs - except Flexi-Tip, Small, Mini-chairs and our XL chairs.



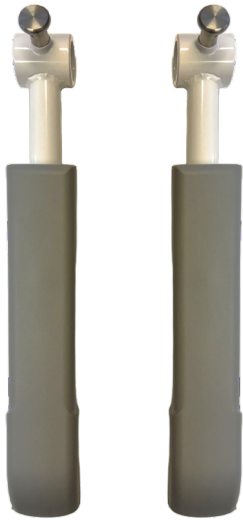
Doesn't fit on M2 for Wall mounted toilets, M2 Mini, 200 & 250 kg.

Art.no., right 310397
Art.no., left 310398

TECHNICAL DATA

| | |
|-----------------------|---------|
| LENGTH OF PU FOAM PAD | 25,5 cm |
| LENGTH OF ARMRESTS | 41,5 cm |
| HEIGHT OF ARMRESTS | 8,5 cm |

ARMREST WITH LOCKS



WITH RELEASE LOCK

Our M2 Tip-Chairs come with armrests that have release locks. The snap locks ensure that the armrests stay firmly and stably on the chair.

The armrests are padded with PU foam for extra comfort and can be used for most of our M2 Shower-/Commode chairs.

Art.no., right 310352

Art.no., left 310353

WITH RELEASE LOCK, MINI

Our M2 Tip-Chairs come with armrests that have release locks. The snap locks ensure that the armrests stay firmly and stably on the chair.

Art.no., right 800229

Art.no., left 800228



ARMRESTS TO BARIATRIC



INCREASED WIDTH 200 KG

If the user needs more spacer between the armrests, you can purchase a set of armrests with extra width for 200 kg chairs, along with the chair or separately.

Each armrest adds 3 cm to the distance between them.

Art.no., right 310364

Art.no., left 310365

WITH RELEASE LOCK, 200 KG

Our M2 Tip-Chairs come with armrests that have release locks. This version is reinforced and used for our XXL chairs.

The release locks ensure that the armrests are firmly and stably attached to the chair. The armrests are padded with PU foam for extra comfort and can be used for most of our M2 Shower-/Commode chairs.

Art.no., right 800362

Art.no., left 800363



HEMIPLÉGIA ARMREST

HEMIPLÉGIA ARMREST

Hemiplegia armrest with bowl in soft PU foam. Foldable and detachable.



The PU cushion can be mounted in two depths with an allen key. This allows the PU cushions to be moved 4 cm further back towards the user, if required.

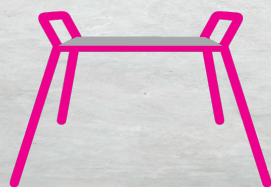
The hemiplegia armrests can be mounted on most of our chairs. The hemiplegia armrest is especially suitable for hemiplegics, paraplegics, tetraplegics and others who need extra support for their forearms.

Art.no., right 800274

Art.no., left 800273

TECHNICAL DATA

| | |
|--------------------------|-------|
| LENGTH OF PU FOAM PILLOW | 30 cm |
| WIDTH OF PU FOAM PILLOW | 11 cm |
| TOTAL LENGHT OF ARMREST | 41 cm |



HMN

since 1934

www.HMN.dk

V 1.1 26.03.2025